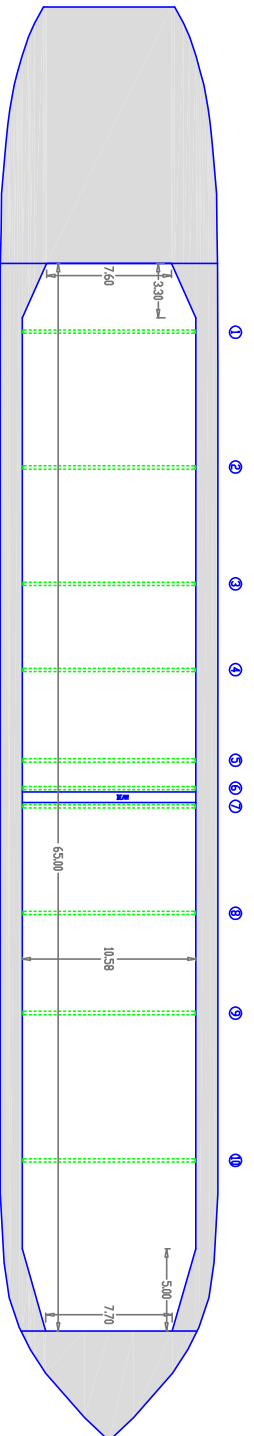
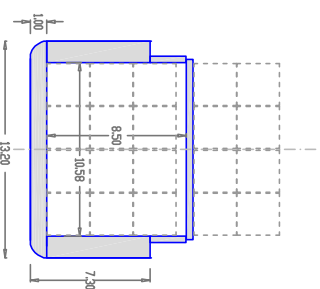
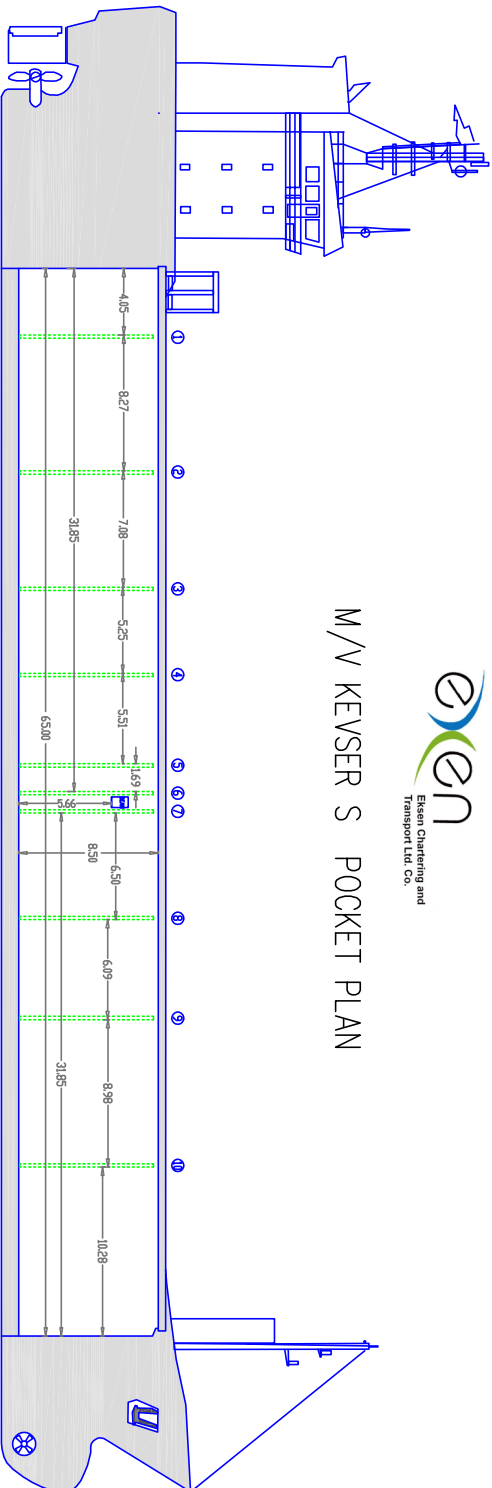


## M/V KEYSER S POCKET PLAN



### SHIP SUMMARY

#### Type & properties

DWT/DWCC : 4334 / about 4150 ton

#### HOLD DIMENSIONS

1. BOX HOLD / 65.00 x 10.58 x 8.50 m

1. PC. PORTABLE BULKHEAD / 10 POSITIONS

IMO NO : 9115937

LDA / LBP / B / D / d : 90.40 / 84.595 / 13.20 / 7.30 / 5.87 m

Speed : 12 knots

GRAN/BALE CAP : 5793,29 m<sup>3</sup> / 204,588 f13

CONTAINER CAPACITY : Cargo Hold 114+ Hatch 92 = 206 TEU

STRENGTHS : Tank Top 18 m<sup>t</sup>/sqm

Hatch Cover 16 m<sup>t</sup>/sqm